



COTESA
COMPOSITES

COTESA company presentation



Nadcap

Production of high performance CFRP components for application in

- Automotive
- Aerospace
- Industrial Parts / General Engineering

Manufacturing

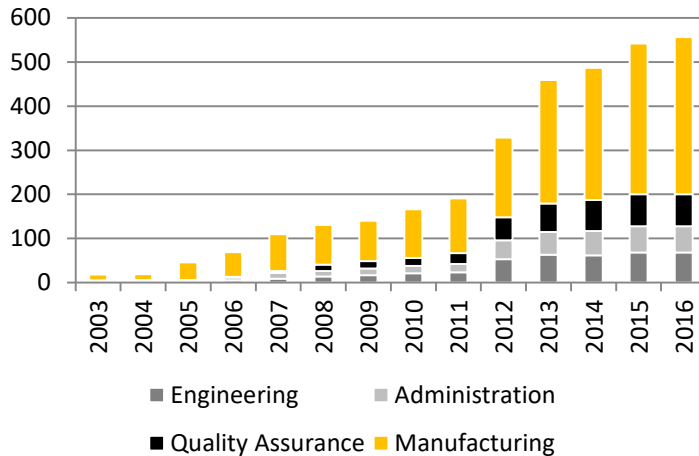
- on a total production area of 38,000 m²
- of more than 6,500 different products and
- more than 12,000 parts per month

Success Factors

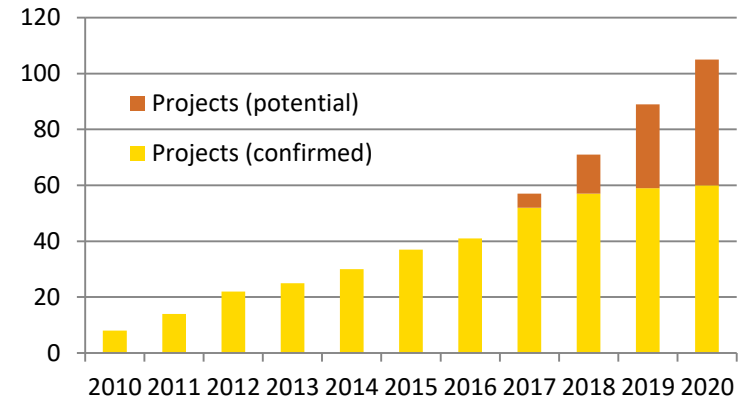
- Systematic and foresighted development of resources
- Openness and reliability towards customers and suppliers
- Technologically leading
- Precise technological profile
- Clear branch focusing
- Qualified and motivated employees

Company development

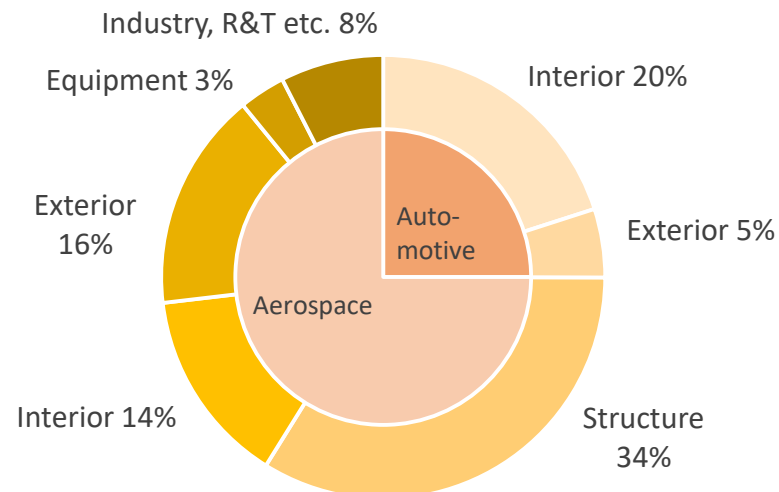
Staff



Turnover [€ m]



Product groups



Locations

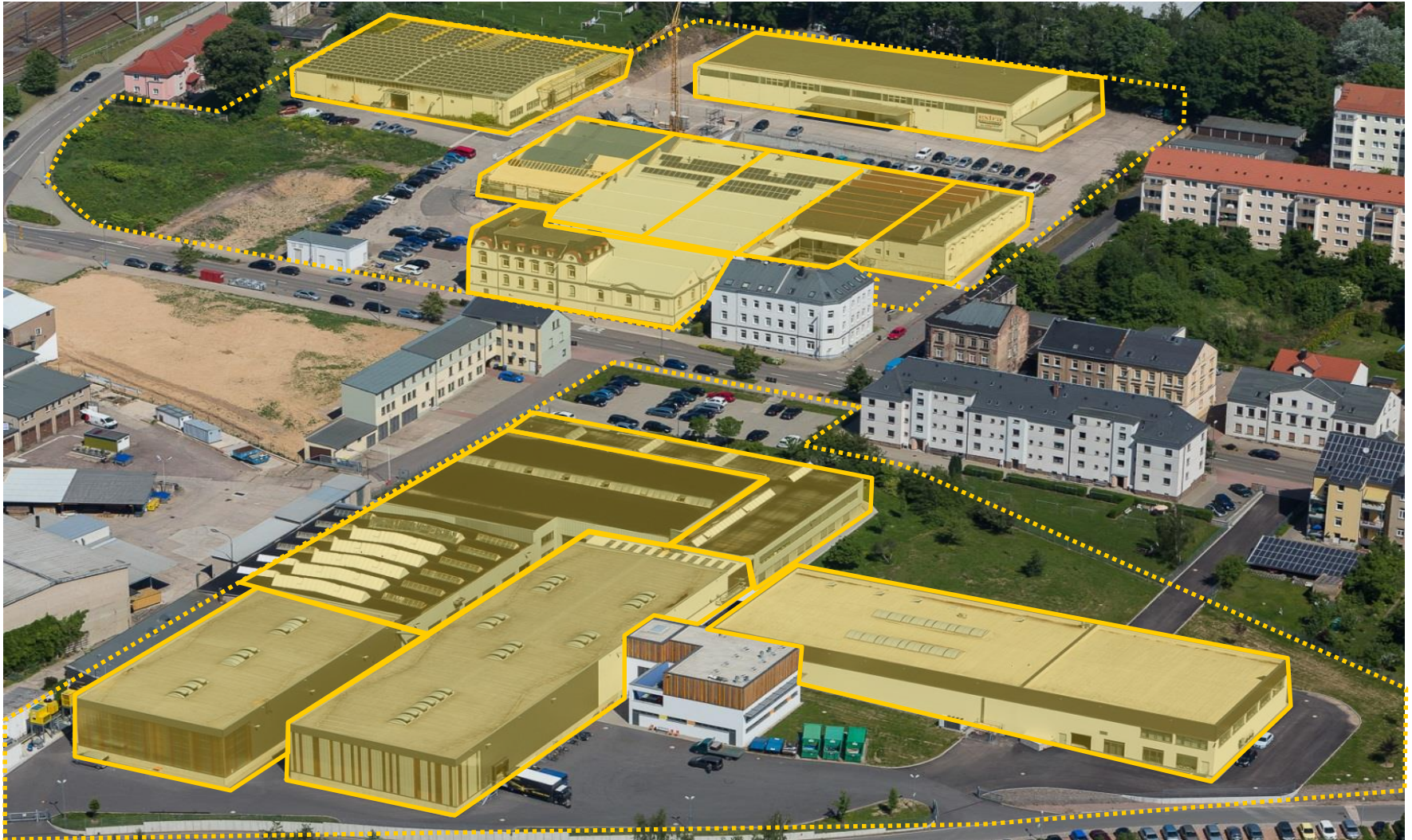


Mittweida: COTESA Plant I
Eissmann COTESA

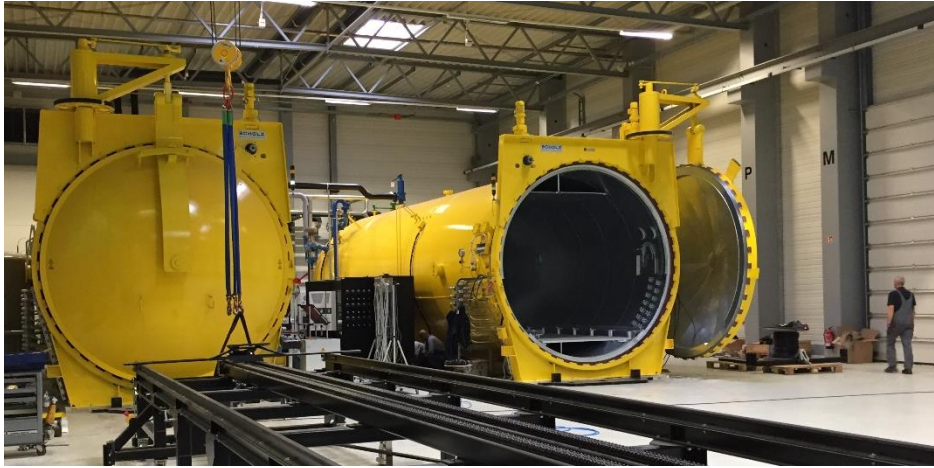
Mochau: Cotesa Plant II und III
KVB gGmbH



Plant I in Mittweida



Plant II in Mochau



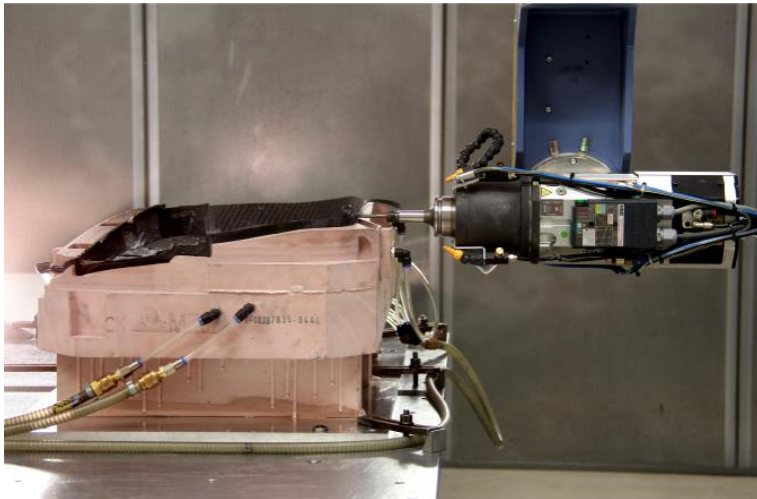
Services



Cutter for parts



Nine autoclaves



Machining with 5-axis-CNC-workcenters



Quality assurance / Material testing

Services



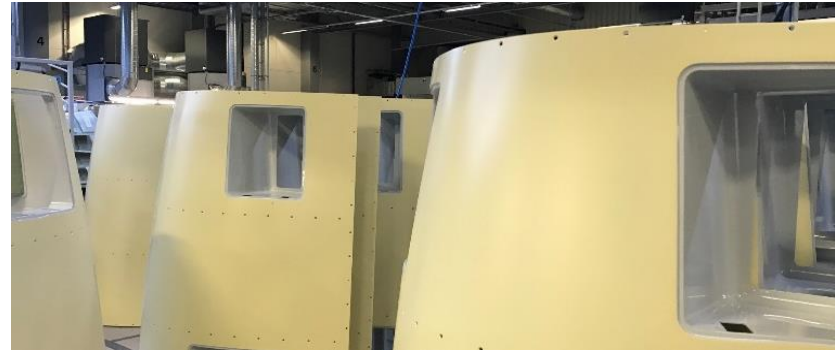
Assembly



Painting



Painting preparation



Delivery of assemblies

COTESA in every Airbus



A400M / A380: Stiffeners



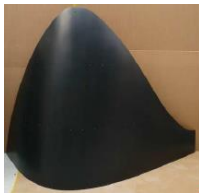
A350: Shear web



A400M: Rip Attachment Angle



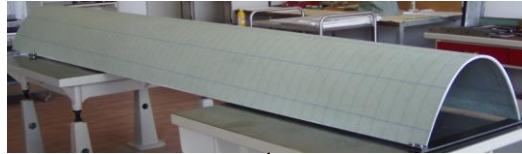
A320: Rudder Fairing



A318-A321 Single Aisle: Belly Fairings



A320: Outer Flap Ribs



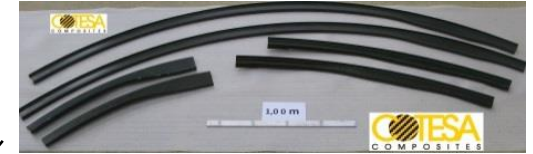
A380: D-Nose



Lavatory Floor Assembly



A380: Transmission shafts



A350: Aux frames



A400M: Stringer Coupling



A380: Washroom



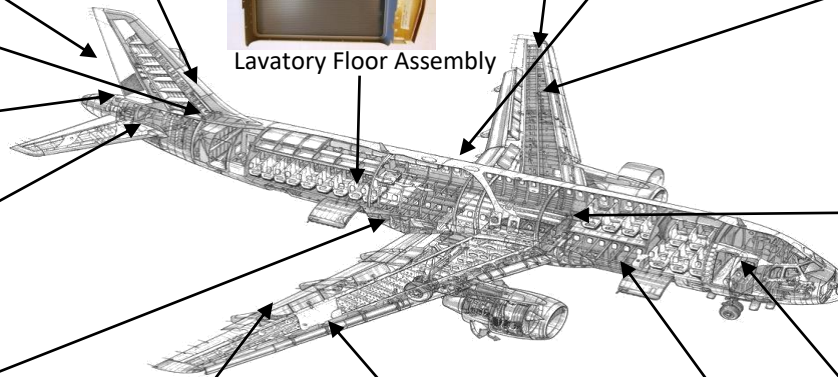
A330: Tank



A321: Track Doubler



A350: Blind Panel



Structural parts



Cotesa Torque Tubes



Aerospace



Automotive

Exterior

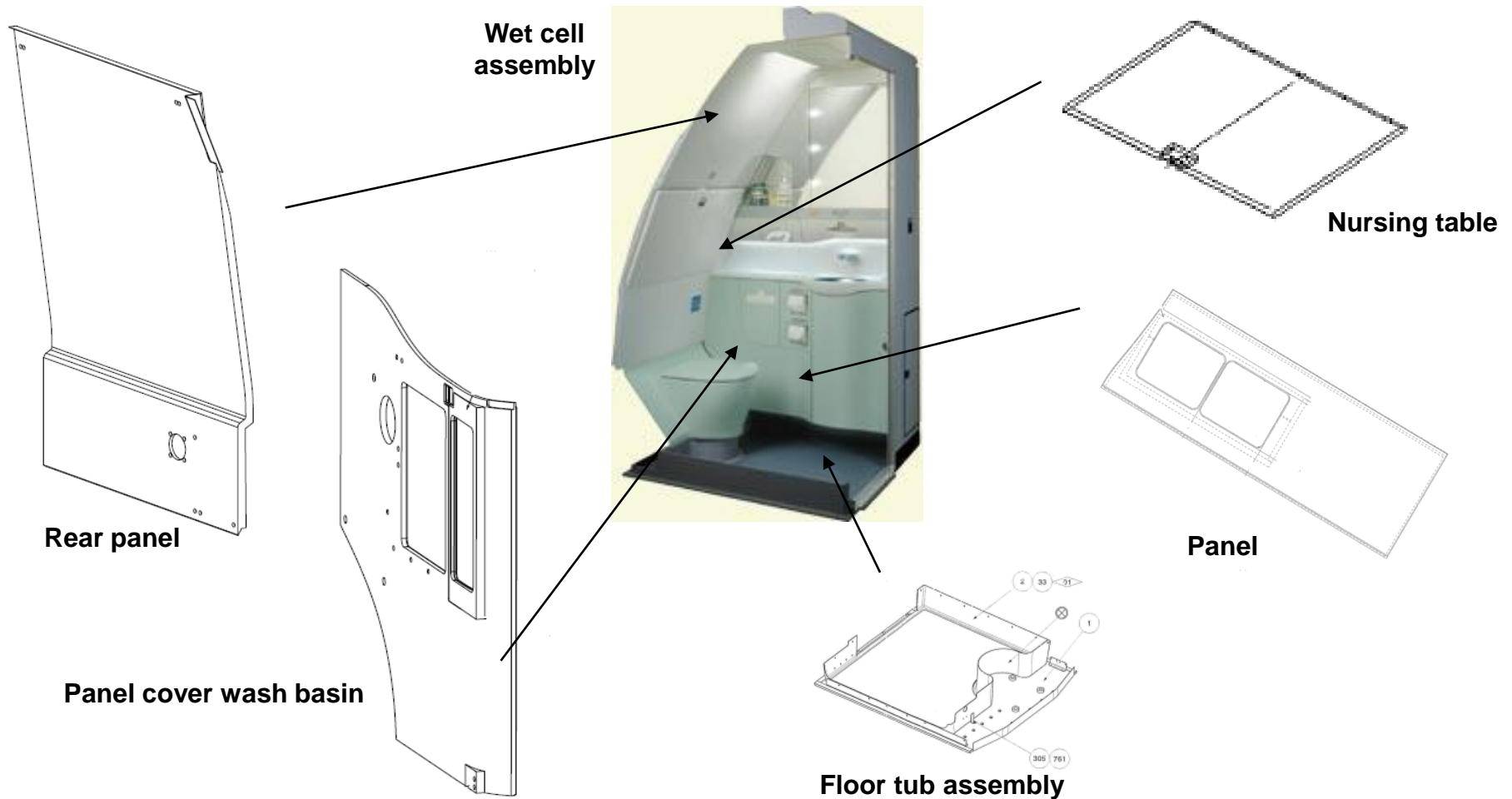


Curved sandwich panels

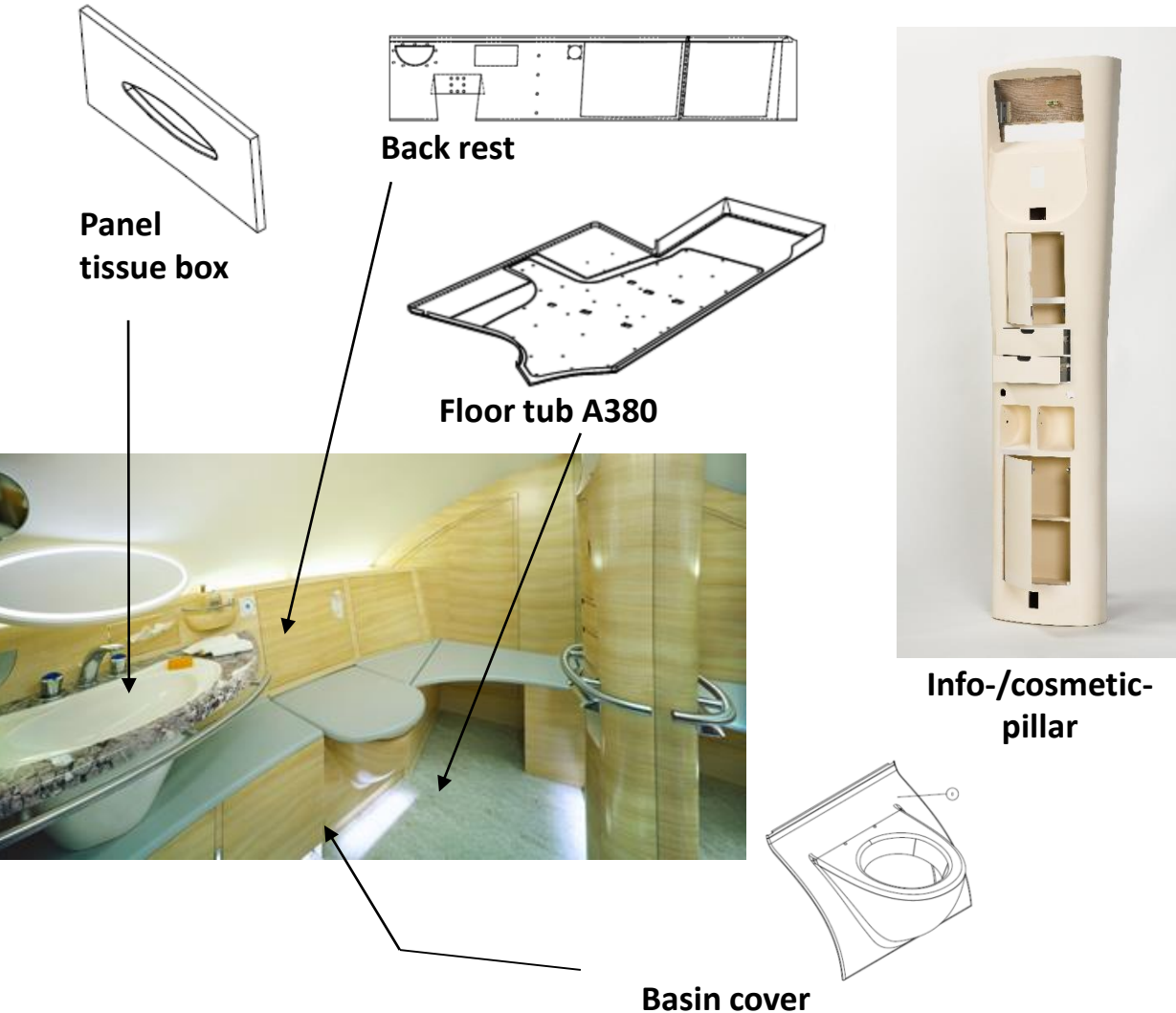


Exterior parts

Interior A318 - 321



Interior A380



Interior A380



Lightweight bulletproof



Automotive components



Automotive components



- Instrument panel
- Doors
- Combined instrument
- Cover passengers side (incl. airbag function)
- Steering column frame
- Step protection



Automotive components



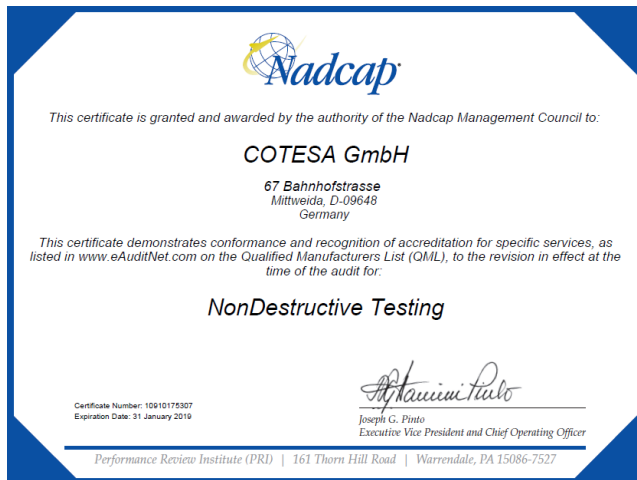
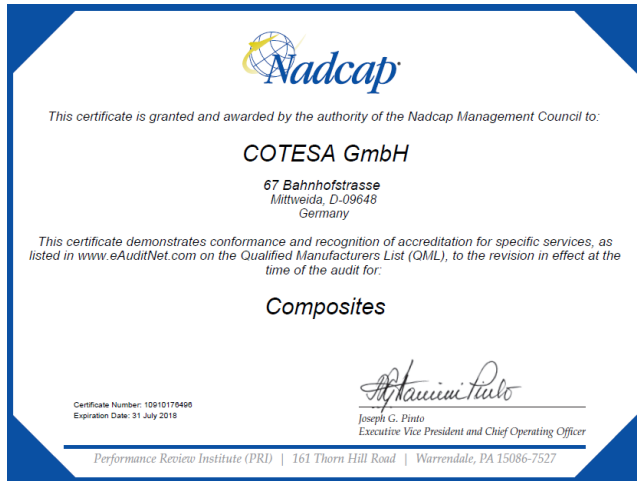
- Rear wing
- Rear diffuser
- Side skirts
- Exhaust deflector
- Spoiler



AMG



Quality management



Certified according:

- EN 9100:2010
- EN 17025:2005
- TS 16949
- NADCAP NDT
- NADCAP Composite

References:

- Airbus
- Airbus Helicopters
- AOA
- Boeing
- Diehl Aerosystems
- Liebherr Aerospace
- Premium Aerotec
- et al.



COTESA GmbH
Bahnhofstraße 67
09648 Mittweida
GERMANY

T: +49 3727 9985 0
F: +49 3727 9985 129
E: info@cotesa.de
www.cotesa.de

Jörg Hüsken
CEO

Dr.-Ing. Udo Berthold
CTO

Hanno Wilhelm
CFO

Dr.-Ing. Steffen Kress
CSO

Martin Kühn
COO

© COTESA GMBH. All rights reserved.
Confidential and copyrighted document.

This document with all of the information contained is the sole property of COTESA GmbH. The delivery of this document or the publication of its contents do not substantiate a claim on the literary property. This document may not be reproduced or shown to a third party without the formal written authorization of COTESA GmbH. This document and its content may only be used for conventional purposes.

